



# Cross Keys Estates

Opening doors to your future



Cross Keys Estates  
Residential Sales & Lettings



Cross Keys Estates  
Residential Sales & Lettings



Cross Keys Estates  
Residential Sales & Lettings

27 George Place  
Plymouth, PL1 3FJ  
Guide Price £170,000 Leasehold



27 George Place, Plymouth, PL1 3FJ

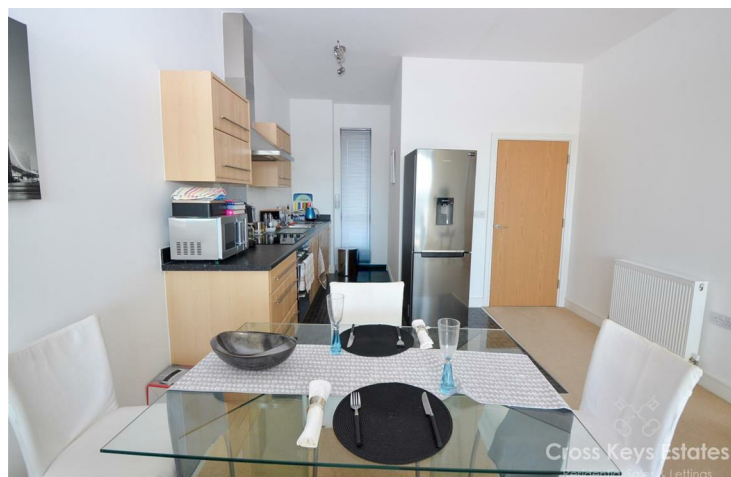
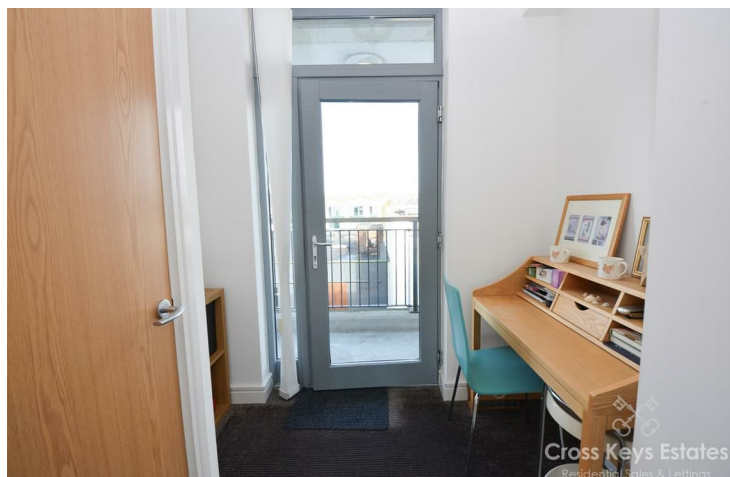
Guide Price £170,000 Leasehold

\*\* Guide Price £170,000 to £180,000 \*\*

Cross Keys Estates is thrilled to present this stunning purpose-built apartment located on George Place in Plymouth. This immaculately presented residence boasts two spacious double bedrooms, making it an ideal choice for first-time buyers or those seeking a comfortable living space.

Originally the show flat when built, this apartment comes fully furnished, allowing for a seamless move-in experience. The expansive open-plan sitting room and dining room are flooded with natural light, creating a warm and inviting atmosphere. This delightful space leads out onto a fabulous balcony, where you can enjoy picturesque views over to Mount Edgecumbe, perfect for relaxing or entertaining guests.

- Stunning Purpose Built Apartment
- Two Spacious Double Bedrooms
- Sleek Modern Fitted Kitchen
- Great Size Stylish Bathroom
- Popular Residential Location
- Immaculately Presented Throughout
- Open Plan Sitting Room/Dining Room
- Fantastic Generous Sized Balcony
- Furnishings Included
- Allocated Parking, EPC=C75



## Cross Keys Estates

As one of Plymouth's leading QUALIFIED estate agents for over two decades, we are proud to have been offering our multi award winning customer service since day one. If you are currently on the market or you are thinking of putting your property on the market, why not give us a call, you will not be disappointed. 98% of our clients recommend us to their friends and family and our results, when it comes to sales, are unrivalled.

### Plymouth

Plymouth, Britain's Ocean City, is one of Europe's most vibrant waterfront cities. Located in one of the most beautiful locations imaginable, Plymouth is sandwiched between the incredible South West coastline and the wild beauty of Dartmoor National Park. Plymouth is 37 miles south-west of Exeter and 190 miles west-south-west of London, between the mouths of the rivers Plym to the east and Tamar to the west where they join Plymouth Sound to form the boundary with Cornwall, it is also home to one of the most natural harbours in the world. To the North of Plymouth is Dartmoor National Park, extending to over 300 square miles, which provides excellent recreational facilities.

The city is home to more than 260,000 people, making it the 30th most populated city in the United Kingdom and the second-largest city in the South West, after Bristol and has a full range of shopping, educational and sporting facilities. There is mainline train service to London (Paddington) and to Penzance in West Cornwall.

There's everything that you would expect to find in a cool, cultural city, with great shopping, arts and entertainment. But there's also hundreds of years of history to uncover, from Sir Francis Drake and the Spanish Armada to the Mayflower sailing in 1620, to a city rebuilt following the Blitz during World War II. With easy access to Exeter and its International Airport and a mainline train station giving direct access to London and a ferry port offering sea crossings to both France and Spain.

Plymouth is governed locally by Plymouth City Council and is represented nationally by three MPs. Plymouth's economy remains strongly influenced by shipbuilding and seafaring including ferry links to Brittany and Spain, but has tended toward a university economy since the early 2000's. It has the largest operational naval base in Western Europe – HMNB Devonport.

### Stonehouse

#### More Property Information

The apartment features a stylish bathroom that is both practical and aesthetically pleasing. Situated in a popular residential location, you will find yourself conveniently close to local amenities, shops, and the charming Royal William Yard, which offers a variety of dining and leisure options.

For added security and peace of mind, the property includes a phone entry system and allocated parking. This apartment truly represents a fantastic opportunity in a sought-after area. Early viewing is highly advised to fully appreciate the quality and charm of this exceptional home.

### Porch

#### Sitting/Dining Room

25'3" x 13'7" (7.70m x 4.14m)

#### Kitchen

11'0" x 6'0" (3.35m x 1.84m)

#### Balcony

11'6" x 26'1" (3.50m x 7.96m)

#### Hallway

#### Primary Bedroom

12'2" x 11'4" (3.70m x 3.45m)

#### Bedroom 2

9'2" x 11'2" (2.80m x 3.40m)

#### Balcony

3'6" x 11'9" (1.07m x 3.57m)

### Bathroom

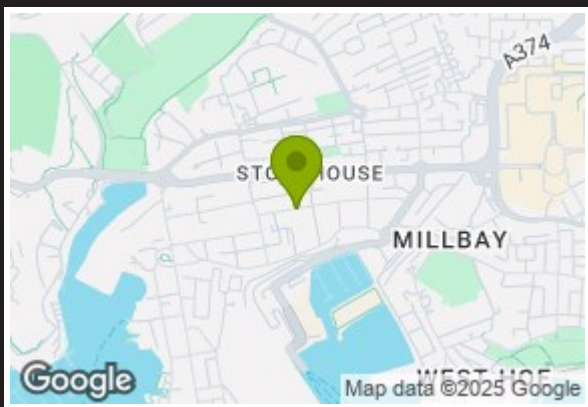
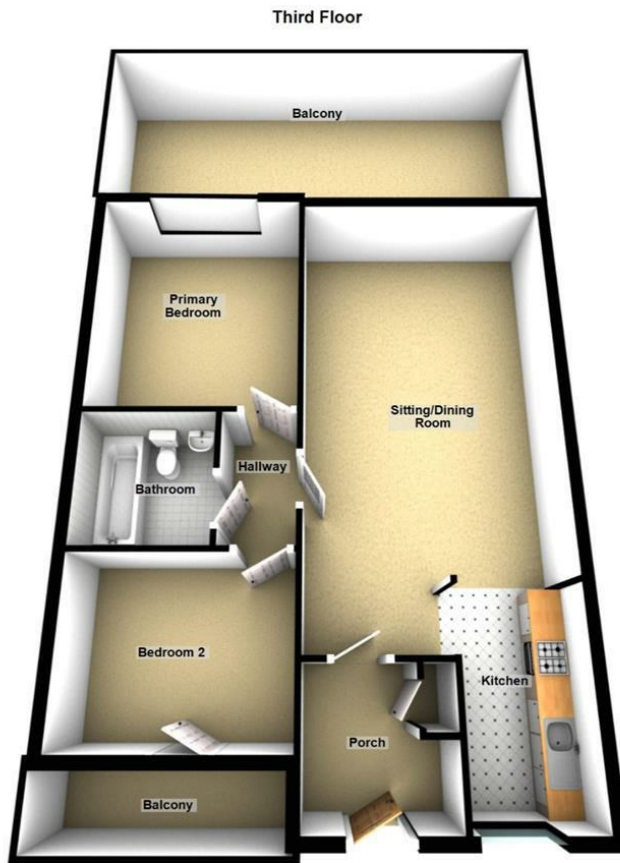
#### Cross Keys Estates Lettings Department

Cross Keys Estates also offer a professional, ARLA accredited Lettings and Management Service. If you are considering renting your property in order to purchase, are looking at buy to let or would like a free review of your current portfolio then please call our director Jack who is a fully qualified and award-winning letting agent on 01752 500018

### Financial Services

Cross Keys Estates are proud to work in partnership with Peter Nixon Financial Services, our whole of market mortgage specialists. With over 18 years industry experience, they are able to source the very best deal to meet their customers circumstances. Offering professional and friendly advice on residential and investment mortgages. Please get in touch to arrange a free, no obligation appointment to see how they can help you. Tel. 01752 255905, Email. sarah.millman@pn-fs.co.uk





Energy Efficiency Rating		Current	Potential
Very energy efficient - lower running costs			
(92 plus) A			
(81-91) B			
(69-80) C		75	76
(55-68) D			
(39-54) E			
(21-38) F			
(1-20) G			
Not energy efficient - higher running costs			
England & Wales		EU Directive 2002/91/EC	

Environmental Impact (CO <sub>2</sub> ) Rating		Current	Potential
Very environmentally friendly - lower CO <sub>2</sub> emissions			
(92 plus) A			
(81-91) B			
(69-80) C			
(55-68) D			
(39-54) E			
(21-38) F			
(1-20) G			
Not environmentally friendly - higher CO <sub>2</sub> emissions			
England & Wales		EU Directive 2002/91/EC	

VIEWINGS AND NEGOTIATIONS Strictly through the vendors agents, Cross Keys Estates MONEY LAUNDERING REGULATION 2003 AND PROCEEDS OF CRIME ACT 2002 Cross Keys Estates are fully committed to complying with The Money Laundering Regulations that have been introduced by the government. These regulations apply to everyone buying or selling a property, including companies, businesses and individuals within the United Kingdom or abroad. Should you either purchase or sell a property through this estate agents we will ask for information from you regarding your identity and proof of residence. We would ask for you to co-operate fully to ensure there is no delay in the sales/purchase process. IMPORTANT: we would like to inform prospective purchasers that these sales particulars have been prepared as a general guide only. A detailed survey has not been carried out, nor the services, appliances and fittings tested. Room sizes should not be relied upon for furnishing purposes and are approximate. If floor plans are included, they are for guidance only and illustration purposes only and may not be to scale. If there are any important matters likely to affect your decision to buy, please contact us before viewing the property.



**Council Tax Band C**



**Cross Keys Estates**  
Opening doors to your future

Sales, Cross Keys House 51-53 Devonport Road,,  
Stoke, Plymouth, Devon, PL3 4DL  
Tel: 01752 500018 | sales@crosskeysestates.net  
www.crosskeysestates.net